

TC 系列固定式接线端子 TC SERIES FIXED TERMINAL BLOCKS

△概述及特点 Overview and Features

采用热固性塑料，大电流安全系数更可靠，结构件采用板式螺钉压接技术，额定交流电压600V，连接导电片的额定电流 60、100、150、200、300、400、600A 共七种规格，连接导线的截面10~300mm²，是目前最大截流量的端子。按排列又分为3P、4P 平板螺钉安装，配用OT、UT 端头使用，更加牢固可靠，可作各类电气装置中的大电流接线之用。

Selecting thermosetting plastic, safety factor of big current is more reliable. Board type screw crimp connecting technology as structure parts. rated AC voltage 600V. rated current of connecting conduct piece with seven specifications of 60, 100, 150, 200, 300, 400, 600A. the cross-section 10~300mm², which is the biggest closure flow terminal. It can be divided into 3P, 4P flat bolt installation according to arrangement, it will be more reliable with OT, UT termination point for connecting big current in different kind electric device.



TC-602

导线截面 wire section: 14mm²

额定电流/电压 rated current/voltage: 60A/600V

长/宽/高 length/wide/high: 58/42.5/35mm



TC-603

导线截面 wire section: 14mm²

额定电流/电压 rated current/voltage: 60A/600V

长/宽/高 length/wide/high: 83.5/41.2/32.5mm

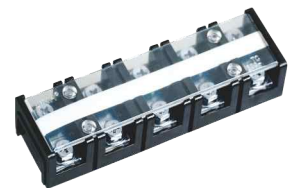


TC-604

导线截面 wire section: 14mm²

额定电流/电压 rated current/voltage: 60A/600V

长/宽/高 length/wide/high: 111.2/41.2/32.5mm



TC-605

导线截面 wire section: 14mm²

额定电流/电压 rated current/voltage: 60A/600V

长/宽/高 length/wide/high: 145/43.2/32mm



TC-1002

导线截面 wire section: 22mm²

额定电流/电压 rated current/voltage: 100A/600V

长/宽/高 length/wide/high: 69.5/55.3/38.5mm



TC-1003

导线截面 wire section: 22mm²

额定电流/电压 rated current/voltage: 100A/600V

长/宽/高 length/wide/high: 99.2/53.5/37.8mm



TC-1004

导线截面 wire section: 22mm²

额定电流/电压 rated current/voltage: 100A/600V

长/宽/高 length/wide/high: 132/53.5/37.8mm



TC-1005

导线截面 wire section: 22mm²

额定电流/电压 rated current/voltage: 100A/600V

长/宽/高 length/wide/high: 173.5/55/38mm



TC-1503

导线截面 wire section: 60mm²

额定电流/电压 rated current/voltage: 150A/600V

长/宽/高 length/wide/high: 114.5/65.3/40.8mm



TC-1504

导线截面 wire section: 60mm²

额定电流/电压 rated current/voltage: 150A/600V

长/宽/高 length/wide/high: 153.5/66/40.8mm



TC-1505

导线截面 wire section: 60mm²

额定电流/电压 rated current/voltage: 150A/600V

长/宽/高 length/wide/high: 193/66/40.5mm



TC-2003

导线截面 wire section: 100mm²

额定电流/电压 rated current/voltage: 200A/600V

长/宽/高 length/wide/high: 133/71/47.5mm

TC、TB 系列固定式接线端子

TC、TB SERIES FIXED TERMINAL BLOCKS



TC-2004

导线截面 wire section: 100mm²

额定电流/电压 rated current/voltage: 200A/600V

长/宽/高 length/wide/high: 177.5/71/44mm



TC-2005

导线截面 wire section: 100mm²

额定电流/电压 rated current/voltage: 200A/600V

长/宽/高 length/wide/high: 224/72.7/46.2mm



TC-3003

导线截面 wire section: 150mm²

额定电流/电压 rated current/voltage: 300A/600V

长/宽/高 length/wide/high: 165/90.5/52.5mm



TC-3004

导线截面 wire section: 150mm²

额定电流/电压 rated current/voltage: 300A/600V

长/宽/高 length/wide/high: 220/90.5/52.5mm



TC-4003

导线截面 wire section: 200mm²

额定电流/电压 rated current/voltage: 400A/600V

长/宽/高 length/wide/high: 165/90.5/52.5mm



TC-4004

导线截面 wire section: 200mm²

额定电流/电压 rated current/voltage: 400A/600V

长/宽/高 length/wide/high: 220/90.5/52.5mm



TC-6003

导线截面 wire section: 300mm²

额定电流/电压 rated current/voltage: 600A/600V

长/宽/高 length/wide/high: 207/100.5/75.5mm



TC-6004

导线截面 wire section: 300mm²

额定电流/电压 rated current/voltage: 600A/600V

长/宽/高 length/wide/high: 275/100.5/75.5mm

TB 系列固定式接线端子

TB SERIES TERMINAL BLOCKS



TB-1503

导线截面 wire section: 0.5-1.5mm²

额定电流/电压 rated current/voltage: 15A/600V

长/宽/高 length/wide/high: 45.5/22/17.5mm



TB-1504

导线截面 wire section: 0.5-1.5mm²

额定电流/电压 rated current/voltage: 15A/600V

长/宽/高 length/wide/high: 54.2/22/17.5mm



TB-1505

导线截面 wire section: 0.5-1.5mm²

额定电流/电压 rated current/voltage: 15A/600V

长/宽/高 length/wide/high: 63/22/17.5mm

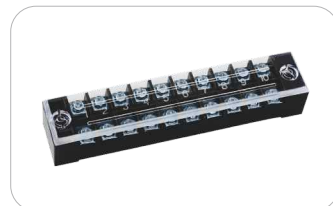


TB-1506

导线截面 wire section: 0.5-1.5mm²

额定电流/电压 rated current/voltage: 15A/600V

长/宽/高 length/wide/high: 73/22/17.5mm



TB-1510

导线截面 wire section: 0.5-1.5mm²

额定电流/电压 rated current/voltage: 15A/600V

长/宽/高 length/wide/high: 107.5/22/17.5mm



TB-1512

导线截面 wire section: 0.5-1.5mm²

额定电流/电压 rated current/voltage: 15A/600V

长/宽/高 length/wide/high: 125.5/22/17.5mm



TB-2503

导线截面 wire section: 0.5-2.5mm²

额定电流/电压 rated current/voltage: 25A/600V

长/宽/高 length/wide/high: 55/30/19mm



TB-2504

导线截面 wire section: 0.5-2.5mm²

额定电流/电压 rated current/voltage: 25A/600V

长/宽/高 length/wide/high: 67/30/19mm

TB 系列固定式接线端子 TB SERIES FIXED TERMINAL BLOCKS



TB-2505

导线截面 wire section: 0.5-2.5mm²

额定电流/电压 rated current/voltage: 25A/600V

长/宽/高 length/wide/high: 79/30/19mm



TB-2506

导线截面 wire section: 0.5-2.5mm²

额定电流/电压 rated current/voltage: 25A/600V

长/宽/高 length/wide/high: 91/30/19mm



TB-2510

导线截面 wire section: 0.5-2.5mm²

额定电流/电压 rated current/voltage: 25A/600V

长/宽/高 length/wide/high: 139/30/19mm



TB-2512

导线截面 wire section: 0.5-2.5mm²

额定电流/电压 rated current/voltage: 25A/600V

长/宽/高 length/wide/high: 163/30/19mm



TB-3503

导线截面 wire section: 0.5-2.5mm²

额定电流/电压 rated current/voltage: 35A/600V

长/宽/高 length/wide/high: 55/30/19mm



TB-3504

导线截面 wire section: 0.5-2.5mm²

额定电流/电压 rated current/voltage: 35A/600V

长/宽/高 length/wide/high: 67/30/19mm



TB-3506

导线截面 wire section: 0.5-2.5mm²

额定电流/电压 rated current/voltage: 35A/600V

长/宽/高 length/wide/high: 91/30/19mm



TB-3512

导线截面 wire section: 0.5-2.5mm²

额定电流/电压 rated current/voltage: 35A/600V

长/宽/高 length/wide/high: 165/30/19mm



TB-4503

导线截面 wire section: 1.5-4mm²

额定电流/电压 rated current/voltage: 45A/600V

长/宽/高 length/wide/high: 70/38/23.5mm



TB-4504

导线截面 wire section: 1.5-4mm²

额定电流/电压 rated current/voltage: 45A/600V

长/宽/高 length/wide/high: 86/38/23.5mm



TB-4505

导线截面 wire section: 1.5-4mm²

额定电流/电压 rated current/voltage: 45A/600V

长/宽/高 length/wide/high: 103/38/23.5mm



TB-4506

导线截面 wire section: 1.5-4mm²

额定电流/电压 rated current/voltage: 45A/600V

长/宽/高 length/wide/high: 120.5/38/23.5mm



TB-4512

导线截面 wire section: 1.5-4mm²

额定电流/电压 rated current/voltage: 45A/600V

长/宽/高 length/wide/high: 221/38/23.5mm



TB-60A/3P

导线截面 wire section: 2.5-6mm²

额定电流/电压 rated current/voltage: 60A/600V

长/宽/高 length/wide/high: 75/38/30.3mm



TB-60A/4P 6P/12P

导线截面 wire section: 2.5-6mm²

额定电流/电压 rated current/voltage: 60A/600V

长/宽/高 length/wide/high: 92.7/38/30mm



TB-100A/3P/4P 6P/12P

导线截面 wire section: 2.5-10mm²

额定电流/电压 rated current/voltage: 100A/600V

长/宽/高 length/wide/high: 86.3/43.5/34.5mm

JHIN、TK 系列活动式接线端子

JHIN、TK SERIES TERMINAL BLOCKS



JHIN12BK

导线截面 wire section: 0.5-2mm²
额定电流/电压 rated current/voltage: 20A/600V
宽/高/厚 wide/high/thick: 40/32/20mm



JHIN13SBK

导线截面 wire section: 2mm²
额定电流/电压 rated current/voltage: 20A/600V
宽/高/厚 wide/high/thick: 40/32/26mm



JHIN20BK

导线截面 wire section: 3.5mm²
额定电流/电压 rated current/voltage: 30A/600V
宽/高/厚 wide/high/thick: 40/32/36mm



JHIN30BK

导线截面 wire section: 8mm²
额定电流/电压 rated current/voltage: 50A/600V
宽/高/厚 wide/high/thick: 48/36/43mm



JHIN411S

导线截面 wire section: 14mm²
额定电流/电压 rated current/voltage: 60A/600V
宽/高/厚 wide/high/thick: 48/36/17mm



JHIN60BK

导线截面 wire section: 22mm²
额定电流/电压 rated current/voltage: 90A/600V
宽/高/厚 wide/high/thick: 56/40/23mm



JHIN100K

导线截面 wire section: 38mm²
额定电流/电压 rated current/voltage: 130A/600V
宽/高/厚 wide/high/thick: 75/48/33mm



JHIN200K

导线截面 wire section: 100mm²
额定电流/电压 rated current/voltage: 240A/600V
宽/高/厚 wide/high/thick: 86/60/40mm



JHIN400K

导线截面 wire section: 200mm²
额定电流/电压 rated current/voltage: 400A/600V
宽/高/厚 wide/high/thick: 124/76/62.6

TK 系列活动式接线端子

TK SERIES TERMINAL BLOCKS



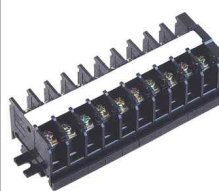
TK-010

导线截面 wire section: 0.75-1-1.5mm²
额定电流/电压 rated current/voltage: 15A/600V
宽/高/厚 wide/high/thick: 40.5/48/8.7mm



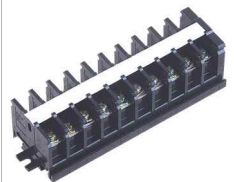
TK-020

导线截面 wire section: 1-2.5mm²
额定电流/电压 rated current/voltage: 20A/660V
宽/高/厚 wide/high/thick: 40.5/34.5/10.2mm



TK-030

导线截面 wire section: 1.5-6mm²
额定电流/电压 rated current/voltage: 30A/660V
宽/高/厚 wide/high/thick: 40.5/36.5/12mm



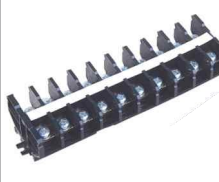
TK-040

导线截面 wire section: 4-8mm²
额定电流/电压 rated current/voltage: 40A/660V
宽/高/厚 wide/high/thick: 40.5/36.5/14mm



TK-060

导线截面 wire section: 4-10mm²
额定电流/电压 rated current/voltage: 60A/660V
宽/高/厚 wide/high/thick: 48/42.5/16mm



TK-0100

导线截面 wire section: 10-25mm²
额定电流/电压 rated current/voltage: 100A/660V
宽/高/厚 wide/high/thick: 53/42.5/20mm

TBC、TBR、TBD、系列活动式接线端子
TBC、TBR、TBD、SERIES TERMINAL BLOCKS

	<p>TBC-10A 导线截面wire section:0.75-1.5mm² 额定电流/电压 rated current/voltage: 10A/600V 厚/宽/高thick/wide /high:9.4/28/24.5mm</p>		<p>TBC-20A 导线截面wire section:1.5-2.5mm² 额定电流/电压 rated current/voltage: 20A/600V 厚/宽/高thick/wide /high: 10.8/31.5/24.5mm</p>		<p>TBC-30A 导线截面wire section:2.5-4mm² 额定电流/电压 rated current/voltage: 30A/600V 厚/宽/高thick/wide /high: 13/36/24.5mm</p>
	<p>TBC-60A 导线截面wire section:4-10mm² 额定电流/电压 rated current/voltage: 60A/600V 厚/宽/高thick/wide /high: 20.6/50/38mm</p>		<p>TBC-100A 导线截面wire section:10-25mm² 额定电流/电压 rated current/voltage: 100A/600V 厚/宽/高thick/wide /high: 27/64/42.5mm</p>		<p>TBC-200A 导线截面wire section:35-95mm² 额定电流/电压 rated current/voltage: 200A/600V 厚/宽/高thick/wide /high: 35.5/80.5/46.5mm</p>

TBR 系列活动式接线端子
TBR SERIES TERMINAL BLOCKS

			<p>TBR-10A 导线截面wire section:0.75-1.5mm² 额定电流/电压 rated current/voltage: 10A/600V 厚/宽/高thick/wide /high:9/42/32.5mm</p>		<p>TBR-20A 导线截面wire section:1.5-2.5mm² 额定电流/电压 rated current/voltage: 20A/600V 厚/宽/高thick/wide /high: 10.7/42/32.5mm</p>
	<p>TBR-30A 导线截面wire section:2.5-4mm² 额定电流/电压 rated current/voltage: 30A/600V 厚/宽/高thick/wide /high: 13.7/42/32.5mm</p>		<p>TBR-60A 导线截面wire section:4-10mm² 额定电流/电压 rated current/voltage: 60A/600V 厚/宽/高thick/wide /high: 20.5/52/40.2mm</p>		<p>TBR-100A 导线截面wire section:10-25mm² 额定电流/电压 rated current/voltage: 100A/600V 厚/宽/高thick/wide /high: 27.6/64/44mm</p>
	<p>TBR-200A 导线截面wire section:35-95mm² 额定电流/电压 rated current/voltage: 200A/600V 厚/宽/高thick/wide /high: 35.8/80.3/55.5mm</p>		<p>TBD-10A 导线截面wire section:0.5-1.25mm² 额定电流/电压 rated current/voltage: 10A/600V 厚/宽/高thick/wide /high: 12.2/53.2/45.8mm</p>		<p>TBD-20A 导线截面wire section:0.5-2mm² 额定电流/电压 rated current/voltage: 20A/600V 厚/宽/高thick/wide /high: 14/53.2/46.1mm</p>